

CASE STATEMENT



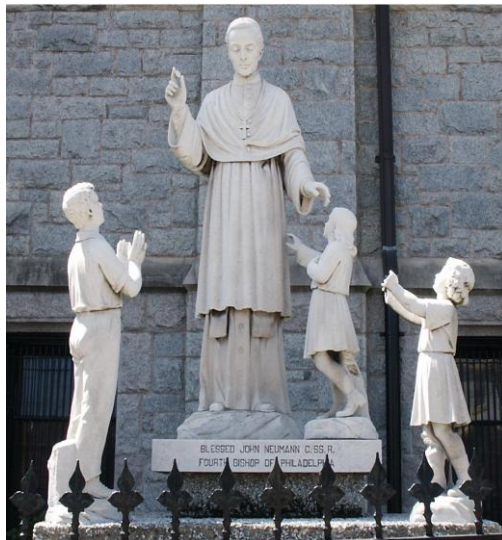
Welcome to
Saint John Neumann
Founded June 3, 1964

TABLE OF CONTENTS

PARISH MISSION	Page 3
A Brief History	Page 4
A Miracle	Page 5
Building Upon Our Life of Faith -	
The Capital Campaign for St. John Neumann	Page 7
Needs Assessment	Page 8
The Feasibility Study	Page 9
The Campaign	Page 9
Many Ways of Giving	Page 15
Timeline	Page 15
Epilogue	Page 16
Appendix	
A - Parish Ministries	Page 17
B - Education Ministries	Page 18
C - Heritage of Faith - Vision of Hope	
The Campaign for the Archdiocese	Page 19
D - Naming Opportunities	Page 20

MISSION OF SAINT JOHN NEUMANN PARISH

As a Roman Catholic community excited about our faith, we are called to continue the mission of Jesus Christ. With a spirit of hospitality, and ever aware of our imperfections, we humbly serve the needs of others, especially the poor and the infirmed. Through the example of our patron, Saint John Neumann, we strive to use our time, talent, and treasure, to reach out to others, to share what we have, to sanctify our world and to reflect the love of Jesus though our daily lives.



THE PARISH HISTORY WAS DEVELOPED BY A DEDICATED GROUP OF ORIGINAL MEMBERS OF BLESSED JOHN NEUMANN PARISH IN PREPARATION FOR THE 25TH ANNIVERSARY OF THE PARISH IN 1989. DUE TO A VARIETY OF CIRCUMSTANCES, THE REMEMBRANCE BOOK DID NOT GO TO PRINT. THANKS TO CASS DRUMMOND, WHO SAVED THE BOOK AND SHARED IT. IT SERVES AS A FOUNDATION FOR THIS DOCUMENT.

ORIGINAL WRITERS

**VINCE BENEDICT
FRANK COX
CASS DRUMMOND
FRANK LABOR
JERRY SACCHETTI
DAN SOLARI**

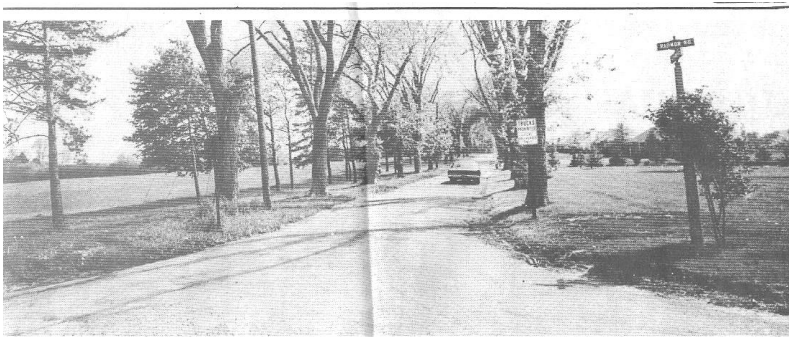
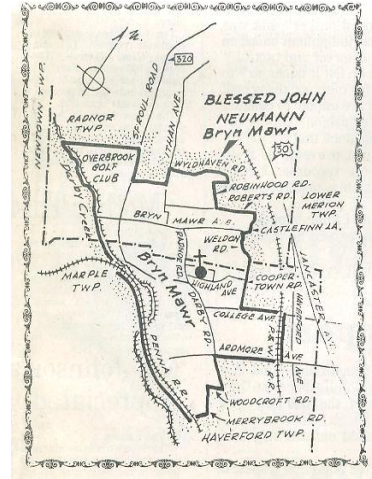
A BRIEF HISTORY

In May 1964, our parish was founded to answer the rapid growth of Catholics in and around Bryn Mawr. Archbishop John J. Krol dedicated the parish to Blessed John Nepomucene Neumann.

The new parish was carved out of the existing boundaries the three neighboring parishes and would include approximately 300 families. The official decree stated that “the prospective offerings of the faithful shall constitute the support of the parish.”

When Reverend Edward P. Murphy arrived as the first pastor, the parish existed largely on paper. There was no church, rectory or school. In fact, Saint Aloysius Academy facilities were utilized in the early days of the parish. The first rectory was once the old gatehouse at the bottom of the hill on Bryn Mawr Avenue. At the top of the hill, the “old tack room,” a structure which had been used as a garage for horses and carriages, and which Saint Aloysius Academy had converted into a gymnasium, set the backdrop as Father Murphy celebrated the first parish Mass.

Father Murphy would overcome many challenges during the early years of the parish. He had little money, resentful parishioners forced to move to a new parish, and local residents opposed to the construction of a school and church in their quiet suburban neighborhood. Yet, the people of God and the pioneering spirit slowly enveloping them organized the first social event in February 1965, a cocktail party at a local country club. The goal was to have fun, and hopefully break even on expenses. To everyone’s amazement, the affair turned a small profit (\$1250), but the stronger bonds it helped to foster within the new parish became the real blessing.



Progress on developing parish buildings would prove much more challenging. There were months of frustrating legal delays, and endless negotiations between the church and its neighbors regarding preservation of the sedate, suburban character of the

neighborhood. A break-through occurred when the parties hammered out a pre-construction agreement concerning the new facilities. The parish buildings would be low and unobtrusive and would have professional landscaping and barrier plantings, to assure that the church and school would not disrupt their quiet neighborhood.

The parish acquired the 10-acre site at Mill and Highland Avenue from the Franciscan Sisters grand sum of \$65,000. Although 'dirt cheap' compared with today's costs, the land acquisition parish with a balance of \$0.90 in its treasury.

Unphased, and guided by what parishioners would "the miraculous intervention of Blessed John



Road
for a
left the
call

Neumann," the parish obtained half a million dollars in financing for the construction of church buildings. Father Murphy presided over the ground-breaking ceremony on November 6, 1966.



A monumental façade of cathedral leaded glass covered the entrance to the Church on Highland Lane by the middle of 1967. Upon completion, the church featured a spectacular panel of natural California redwood mounted directly behind a simple altar. This backdrop dramatically highlighted the life-size, semi-modern figure of Christ on the cross. This spotlighted figure of Jesus became the dominating focal point of the interior of the Church creating a soft, natural statement of 'prayer and peace.'

The first Mass in our permanent church was celebrated on August 20, 1967 with Cardinal Krol presiding. At its formation, the parish was placed under the intercession of Blessed John Neumann. In 1976 John Neumann was canonized to Sainthood. Feeling great privilege, members of our parish played an important role in John Neumann's canonization

A Parish with a Miracle

Michael Flannigan was 6 years old when doctors discovered that he had a fatal type of bone cancer. Robert McNamee, MD, a parishioner, was Michael Flannigan's orthopedic surgeon. Recognizing the grave seriousness of her son's condition and exhibiting a great faith in the Lord and intercessory prayer, Mrs. Flannigan began saying novenas to Blessed John Neumann. Within two years, the disease had fully disappeared. According to Dr. McNamee, this cure outcome was unexplainable by normal means. The Sacred Congregation certified the cure as a miracle attributable to Bishop John Neumann, and recommended that he be enrolled as a Saint of the Roman Catholic Church. On November 13, 1976, Pope Paul VI decreed the appointment of Bishop John Neumann as the first American Saint. A group, led by Monsignor James Meehan, attended the canonization in Rome.



The original staff - Sister Rita Bernadette (1st grade), Janet Dolent (2nd grade), Sister Mary Patricia (3rd and 4th grades), Sister Marie Rose (5th and 6th grades), and Sister Ann Rosaire, the principal and 7th and 8th grade teacher; Mrs. Luch Kozikowski taught Social Studies.

The new school opened a couple weeks later on September 6, 1967 with an enrollment of 153 students. The new classrooms, lunchroom, library, kitchen, offices and kindergarten facilities left students, faculty, and parents nearly speechless.

A few years later our neighboring parish, Saint Colman, was suffering declining enrollment. Prudent thinking suggested that a consolidation of schools would strengthen Catholic education and in 1976 the schools became Saints Colman - John Neumann School. Classes ranged from grades 1 to 8 in addition to a kindergarten. Today the school

has 233 students.

Saint John Neumann parish has been blessed with tremendous leadership over its brief 45-year history. Monsignor James Meehan became its second pastor in 1981 and served with distinction through 2001. In the words of some parishioners, "Msgr. Meehan won our love and affection through his dedication and hard work and genuine love for us as our spiritual Shepherd."



To keep up with the technologies of the day, Saints Colman-John Neumann School was enlarged in 1989 to include a modern computer room with 18 computers. To this day Saints Colman-John Neumann exercises forward thinking in applying the technology curriculum. As such, students utilize computers as part of the curricula beginning in kindergarten. An updated science lab was later added. Most recently, a new kindergarten section was added to meet an influx of pre-school children in the parish.

Sports have always been an important aspect of Saints Colman-John Neumann School. Over the years the school had have winning teams in field hockey, volleyball and soccer. Currently, there are teams in Lacrosse and Basketball. In 1989, the parish again harnessed its resources to address priorities of the parish community by leveling off and transforming the corner lot of the church property (where Mill Road intersects Highland Avenue) into an "all sports" playing field.

In many ways the history of Saint John's is a love story; the tale of selfless dedication to the parish by its people. Soon after the parish began, an enthusiastic group of volunteers met with Father Murphy and asked a simple question, "What can we do to help?" Over the years the parish has grown in its service to the Lord, each other, and especially those in need both within the parish and beyond the borders. The activities are varied and all parishioners are welcome to participate. These include:

SACRAMENTAL MINISTRIES¹

- **Altar Servers:** Open to parish girls and boys in grades 6 through 8.
- **Altar Guild Ministry:** Responsible for the appearance of the church.
- **Eucharistic Ministers:** Help with Holy Communion distribution at Mass, to the sick, homebound, in nursing homes or in the hospital.
- **Liturgical Ministries:** Assist in the development of meaningful liturgy.
- **Lectors:** Participate at Mass by reading the Word of God.
- **Ushers:** Make all who attend Mass feel welcome.
- **Music Ministry (Choir, Cantors):** Sing at Sunday Masses Thanksgiving, Christmas, Holy week liturgies and all services where sacraments are administered. The Christmas concert is always a highlight of this talented group.
- **Rite of Christian Initiation of Adults:** for individuals considering joining the Catholic Church, or Catholics who have not received the Sacrament of Confirmation

. Building Upon our Life of Faith - The Capital Campaign for Saint John Neumann

Today, the parish of Saint John Neumann, in the tradition of a generation of parishioners that implemented God's plan for worship in Bryn Mawr, is again harnessing its resources to address priorities for the parish community and to extend the mission to which we have been called. Just as the first parishioners met with Father Edward Murphy and planned the first steps of our parish, our current pastor, Father James McKeaney, met with the Parish & Finance Councils and various active members of the parish to discuss the vision for the parish going forward. Key to planning is addressing the challenges to continuing the mission of our parish well into the future as a growing and changing parish family. In 2007, a strong endorsement from the leadership was issued to create a Life Center (home to a social center, athletic facility, and school facilities that would enhance our parish ministries, organizations and upgraded space for the school). Today's life needs goes well beyond those that the pioneer members might have envisioned. As such, our present multipurpose space serves as cafeteria, gym, stage and home for the homeless. While the parish has always been flexible in utilizing its

¹ A complete listing of all ministries... Parish Ministries, Ministries to the Greater Community (in and around Bryn Mawr), Education Ministries etc. are listed in **Appendix D** of this document and also on the parish website @<https://www.sjnparish.org>

facilities, the increased size and scope of our parish activities has strained our physical resources. To address creating more gathering areas, Casaccio Associates (architect) was contracted to capture our vision and provide a long range plan that might best satisfy the growth and renewal of the parish well into the foreseeable future. The resultant concept of a *Parish Life Center*² was presented in 2007 for evaluation and validation. Could this building incorporate and allow for expansion of the work of nearly 30 active ministries plus provide Saints Colman-John Neumann Elementary School the facilities to maintain its leadership as a 21st Century model Catholic School?

Since our Church must meet many diverse needs of a parish “alive” in the Gospel, a *Parish Life Center* provides the place to house these many manifestations of a vibrant Church driven by the living Spirit. The need to build and nurture community, education, and evangelization requires appropriate resources and space. The ‘bricks & mortar’ objectives in our plan recognize a commitment to our mission by providing adequate physical resources, a sound fiscal base and strong programs and services to meet the many needs of our parish.

The strategic planning process fostered by Father Jim, our Parish Council, and many knowledgeable parishioners who work in our ministries have brought us to the threshold of a new time of growth and expansion.

THE NEEDS ASSESSMENT

A defining parish-wide Needs Assessment was conducted in late 2007 to clarify the parish’s disposition towards two possible projects; construction of a Parish Center and repairs / renovations to the current church building.

² The term, ‘Life Center’ has become more commonly used for these multipurpose facilities in the last 5-7 years. The concept reflects the call to live more fully in Catholic Christian community, through the shared experiences of the work of our Church. Many parishes are not only embracing the creation of such facilities, but are rekindling a new life in the parish by producing servant leaders – the very thing that Christ has challenged us to be.

- Strong endorsement of all of the identified objectives included:

Athletic Facility, Cafeteria/Stage, Confessional area, Doors (vestibule/nave), Elevator, Endowment Fund, Gathering Space, General purpose room(s), Handicap accessible lavatories. These objectives were the main points used to construct a strong feasibility study to measure the attitude of the parish with an expansion project.

THE FEASIBILITY STUDY

The Archdiocese of Philadelphia has guidelines established for any new construction project. Prior to submitting the project for approval, the parish must conduct a feasibility study. The feasibility study presents to identify leaders within the Saint John Neumann community the project under consideration and the proposed campaign to fund this objective. It seeks to answer the following questions:

1. How aware are people of the project?
2. How does this project support the mission to which we are called?
3. What is the potential financial support for the project?
4. How do we maximize our strengths in a customized campaign?

The 2007 study conducted by philanthropic consultants, Federico Associates, recommends moving forward with planning and executing a capital campaign. A comprehensive outline of the results was listed on the parish website but top recommendations include a minimum philanthropic goal of around \$4,000,000. These results were then presented to the Parish Council, the Finance Council and a town meeting of all parishioners in 2008 with a recommendation to revise and refine the original plan. That work has now been accomplished.

THE CAMPAIGN

The concept of philanthropic giving holds that the highest destiny of OUR PARISH can only be realized when our parish evaluates its mission and vision, projects them into the future, and takes every step possible to realize them.

Based on Feasibility Study recommendations and subsequent enthusiasm about a proposed newly constructed building which includes worship space renovation, the capital campaign seeks to raise a minimum campaign goal of around \$4 Million. However, this minimum goal could be adjusted higher depending on the strength of Quiet Activity prior to

launch of the campaign. In essence, the more we raise as a part of this campaign, the lower potential debt the parish might incur.

In addition, a parallel Archdiocesan major initiative (also a capital campaign) is underway. All Archdiocesan member parishes are invited to participate in a campaign entitled “*Heritage of Faith – Vision of Hope.*” As such, St. John Neumann will combine our “Building Upon Our Life of Faith” campaign with the Archdiocesan objectives to maximize efforts to support both campaigns. The combined campaign’s objectives must include an additional \$855,000 to accommodate Archdiocesan participation.

Clearly, the level of support for the combined campaign is both exciting and challenging. However, a greater objective of the campaign will be to increase volunteerism and involvement in this large effort. Candidly, we believe this lofty goal is quite challenging but reachable. We are called as a Catholic community to be accountable for all our resources as we endeavor to build our faith both as parish and as members of the greater Archdiocese ...and to pass it on! Through this combined Capital Campaign, we seek to raise as much of the total costs for the combined project as possible with a minimum goal of \$4 million.



the
social

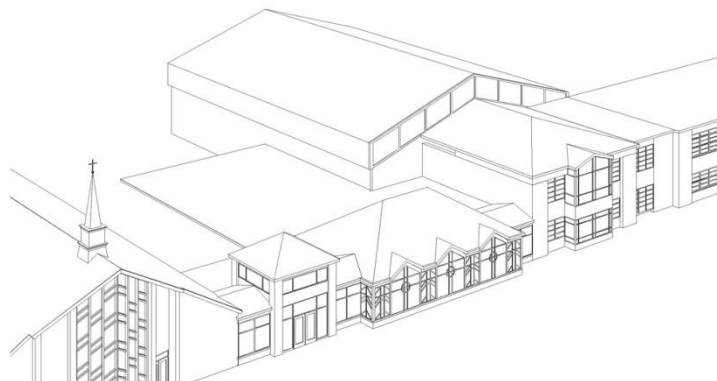
The
project will
involve a
connection with
Main Church, a
gathering area,

a new athletic facility, an addition to the school, technically sophisticated ministry meeting rooms, and storage that will be available to all parish activities. The architect’s view of the outside shows how nicely the new construction will blend with our current facility. An original consideration was the renovation of the convent, but based on the input of the parishioners involved in the design, it was decided to raze the convent and build a completely new structure that fully meets the needs identified.

The cost for construction and renovations, with all contingencies considered is estimated to be \$5,521,500. In addition, as part of our participation in the larger Archdiocese of Philadelphia “Heritage of Faith, Vision of Hope” campaign, Saint John Neumann will include the suggested \$854,750 financial objective. The difference in amounts related to the Archdiocese

St. John Neumann Parish	
Project Details	
The Parish Center	
• Construction Costs (est.)	
- Site	\$ 380,000
- Building	\$3,906,500
• <u>FFE, telephone, signage, security...</u>	<u>\$ 243,000</u>
Sub-total hard costs	\$4,529,500
• <u>Soft Costs etc.</u>	<u>\$ 490,000</u>
Base Project Development costs	\$5,019,500
• <u>10% contingency</u>	<u>\$ 502,000</u>
Total Estimated Project Development costs	\$5,521,500
• Archdiocesan campaign participation	\$ 854,750
Total Cost: \$6,376,250	

results from the money each parish can expect returned as a result of the Archdiocesan campaign.



Parish Life Center Specifics

- Site costs and temp construction (parking, etc.) 14,000 sq feet @ 230 per sq/temp estimated cost \$ 4,600,000
- Addition of one large-scale meeting room which can double as space for an adult education center
- Youth Minister's Office, Youth Lounge which can double as meeting space
- 2 new handicapped restrooms; Renovation of existing restrooms
- Upgrade the heating, ventilation, and air conditioning systems to energy efficient levels
- Much needed additional storage
- Replacement of the atrium and add administrative office space
- Kitchen for functions in the meeting rooms
- Athletic facility
- Classroom and a dedicated area for a pre-kindergarten program

Educational Endowment

- Support various Educational initiatives identified for the youth of the parish. 5% of all dollars raised will be channeled toward the creation of an endowment.

Saint John Neumann Church

- Expansion and renovation of the Narthex

Archdiocese of Philadelphia

- Parish Priorities
- Catholic Education
- Cathedral Basilica
- Saint Charles Seminary
- Clergy Retirement
- Catholic Human Services

The combined campaign seeks to raise a minimum of \$4 million. A strong initial phase (known as the Quiet Phase) could allow the parish to increase the projected minimum goal. As

well, the more the campaign raises, the stronger the parish's financial picture will be, as the parish is committed to providing the balance through financing.

We will invite the support of every parishioner for the objectives detailed above. The range of gifts used in the visitation process will encourage multi-level gifts. In consideration of Saint John Neumann Parish and all for which it stands, and with regard to our current combined objectives, we hope that donors will decide their own level of philanthropic support.

for
\$4
and
gifts

St. John Neumann Parish Capital Campaign	
Parish Center	
• Total Project Costs	\$5,521,500
• <u>Archdiocese capital campaign</u>	<u>\$ 854,750 (65% net)</u>
	Total Project: \$6,376,250
• Feasibility Study recommendation	\$ 2.5 – 3 million*
	➤ <u>(strong Quiet Phase/ campaign revenues) \$ 4 million</u>
Possible shortfall	(\$2,376,250)

The mechanism raising a minimum of million will be multifaceted will include and pledges from the parishioners,

constituencies, friends and others who support St. John Neumann Parish. Unless restricted, each pledge is applied toward the combined objectives of the project. Again, it is hoped that all project costs will be covered through the efforts of this historical campaign.

However, we are guided by the Feasibility Study recommendations and have devised alternate plans in the event the campaign realizes less than the minimum financial goal or more optimistically, raises greater than the minimum goal. As is standard practice the Finance and Parish Councils will construct financing options and debt service strategies.

All philanthropic dollars, once committed, constitute an investment in the continuing mission of St. John Neumann Parish and that of the Archdiocese at large. Volunteers will be needed at every phase of the project. The campaign will capitalize on the talents of every

parishioner and no talent is too small. All volunteers will be asked to adhere to the five traditions of Christian philanthropy:

- Attend a volunteer's workshop
- Make a personal commitment in advance of soliciting others
- Solicit at least one and probably five to six other parish families
- Personally acknowledge anyone whose gift you solicit whether they give or not
- Pray daily for the success of the campaign

It is critical to note that a campaign such as our "*Building Upon Our Life of Faith*" is not **only** about raising funds. It raises the very essence of evangelization and faith if done right.

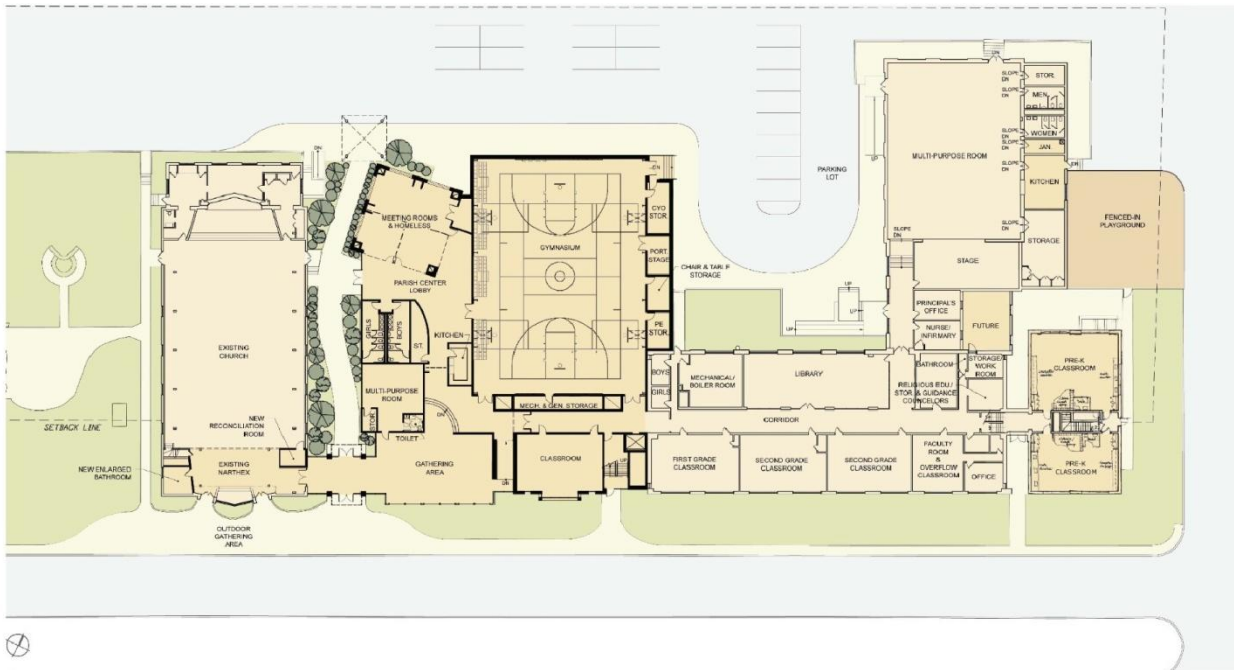
Other benefits that accrue from the initiation of a capital campaign include the following:

- the strengthening of the lines of communication within our parish community;
- the involvement of as many members of the parish community as possible;
- the opportunity to tell the story of St. John Neumann Parish - its mission, vision, plans and objectives;
- the ability to call upon the leadership to help spearhead this effort and, in doing so, to help establish a new level of involvement for all members;
- an invitation for broad-based participation by all members, as well as philanthropic participation by the extended family of St. John Neumann Parish encouraging a level of participation which has significance within their budget;
- the recognition that everyone who participates in any way is appreciated and cherished as a member of our parish family;
- a measurement of the fuller participation in community life to which this campaign calls us.

MANY WAYS OF GIVING

A governing principle for a philanthropic gift is that the donor reflects and gives thoughtful consideration to the financial commitment he or she will make. Several options will be available including, but not limited to multi-year pledges, asset transfers (gift of stocks, real estate or other assets to benefit the project), memoriam/honorariums in the form of naming opportunity (dedication of a particular part of the building to memorialize or honor a family member or friend), matching gifts (matched by employers), and others. The campaign will put in place those

tools necessary to facilitate the donor's preference. Below displayed is the artist's rendition of the inside of the new building with proposed naming opportunities.



TIMELINE

The Capital Campaign will be formally launched in the February 2010 and will continue through February 2013. The active portion of the campaign occurs over a very focused period of 8 – 10 weeks. During this time, volunteers who have pledged their own financial support first will be visiting others to share their enthusiasm for the campaign and to personally invite participation of fellow parishioners. We anticipate a broad-based number of volunteers - members of St. John Neumann Parish - serving as campaign visitors. When all is said and done, we hope that more than one hundred volunteers will serve as visitors and will invite others to do the same. Gifts and pledges (over a three year period) at many levels are welcome and appreciated. Parish members are also asked to pray for the success of this campaign and all for which it stands.

The cornerstone of all we do must be grounded in our belief in the Lord and in our Church. With faith, we attain fulfillment. This project will strengthen our ability to experience deeper fellowship with other parishioners, provide a sufficient place to serve those in need and in the tradition of our patron, John Neumann, provide much greater witness to the next generation of leaders, our children.

EPILOGUE

In consideration of the leadership, generosity and stewardship of those who preceded us, we launch this *Building on Our Life of Faith* Capital Campaign as a logical progression of our mission of community and service. The challenge of meeting the financial objectives calls us as a family to literally build on this parish legacy. Successful achievement will keep the mission and the spirit alive at St. John Neumann and insure the future of our Parish, our school, our faith, and our children. At Saint John Neumann Parish the people have always come together for the betterment of our parish community. This next chapter needs to be written by our church community; It is OUR mission that we joyfully present this project to you, our friends.



The Life of the Parish Appendix A

PARISH MINISTRIES

- **Welcoming Committee:** Contact and welcome new parishioners.
- **CHILDREN'S CHURCH SCHOOL – SUNDAY GATHERING OF PRE-SCHOOL CHILDREN .**
- **Communications:** Works on the parish website.
- **C.Y.O. Athletic Board:** Fosters growth of youngsters through a sports program.
- **Finance Council:** Serves as an advisory group to the Pastor on fiscal matters.
- **H.O.P.E. Ministry:** Helping Other Parishioners in Emergency in times of need.
- **Hospitality Committee –** Welcome after Sunday Masses
- **Pastoral Council:** Fosters participation in the life and mission of the parish.
- **Prime Timers:** Plans trips for parishioners in the fall and spring each year.
- **S.J.N. Travel Club:** parishioners and friends enjoyed travel originating from our parish.
- **Prayer & Scripture Sharing:** Members explore and discuss the Sunday readings.
- **Sacred Scripture Lecture:** an adult education lecture series on Sacred Scripture.
- **Spiritual Reading Groups:** discussions about spiritual reading.
- **Young at Heart (Senior Group):** A social organization fostering Christian unity among our fellow parishioners and those from neighboring parishes.
- **Youth Outreach –** Peer Group Teaching on Christian Values.

MINISTRIES TO THE GREATER COMMUNITY

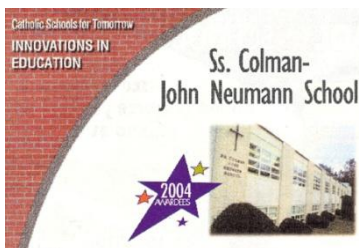
- **Interfaith Hospitality Network:** Create a homelike setting for displaced families.
- **Saint Vincent de Paul Society:** Collects food and clothing for the poor and needy.
- **School Ministry at Our Mother of Sorrows:** Provides a Junior Great Books program, an Enhanced Math Program and a Testing Skill program for the students of our sister parish, Our Mother of Sorrows. There is an annual school supplies collection and fundraiser for the "wish list" for this school in West Philadelphia.
- **Manna Program:** Helps maintain food pantries for the poor.
- **Operation Rice Bowl:** Sacrifices during Lent to alleviate hunger in the world.
- **Meals to Feed the Poor:** Preparation of frozen dinners supplied to the homebound.
- **Respect Life Committee:** Work for preservation of life from conception to natural death.
- **Alcoholics Anonymous:** Shares their experience, strength, and hope as they recover from alcoholism.
- **Red Cross Blood Drive:** Sponsors Parish blood drives.
- **PREP (Parish Religious Education Program):** assists parents in sharing the faith with children who do not attend Catholic schools.

The Life of our Children, the Parish School Appendix B

EDUCATION MINISTRIES

- Saints Colman—John Neumann School works diligently to form a Faith community among the faculty and among the children. The educational program embraces and facilitates the spiritual, intellectual, and social development of the individual student. It seeks to realize these goals with the cooperation and guidance of parents whom we recognize as the primary educators of children. The school has grown to become one of the leading educational institutions in our area.

SCHOOL PRINCIPALS	
Catherine Blumstein	2004 to present
Mary Ann Kaupp DeAngelo	1991 - 2004
Margie Covello	1988 - 1991
Sr. Mary Theresa Coll, OSF	1982 – 1988
Sr. Honor Kieran, SSJ	1979 – 1982
Sr. Kathlenn Donovan, OSF	1976 – 1979
Sr. Deborah Donnelly, OSF	1974 – 1976
Sr. Mary Francis Wood, OSF	1973 – 1974
Sister Ann Rosaire, OSF	1967 – 1973



- Home and School Association:
 1. To advance Catholic education and the welfare of all school children of the parishes;
 2. To act as an advocate in promotion of parent-teacher activities and to increase, on the part of its members, interest in education and civic affairs related to our Catholic community;
 3. To provide an opportunity for parents and teachers to work together for the good of the children.
- Supermarket Certificate Program: raises money by selling script and vouchers.

Growing, changing, serving young and old, our parish has always focused on its mission of bringing all to the joy of knowing and serving the Lord, the Church, our local community and the poor. This mission leads us today and will be the foundation of all that we do in the future.

The Archdiocesan Program Appendix C

Heritage of Faith – Vision of Hope

The Campaign for the Archdiocese of Philadelphia

The literature related to the campaign highlights “an extraordinary heritage, a new century of faith and life for the Church of Philadelphia.” In concert with the Bicentennial of the Archdiocese of Philadelphia, Cardinal Justin Rigiali, Archbishop of Philadelphia, with the

assistance of priests and lay leaders, has identified specific and pressing needs facing our Archdiocese.

Strategic Objectives

- I. Renew the parish as the center of our Catholic Community
- II. Ensure that quality Catholic education is accessible throughout the Archdiocese
- III. Restore and preserve the historic Cathedral Basilica of Saints Peter & Paul
- IV. Invest in priestly formation and campus infrastructure St. Charles Borromeo Seminary
- V. Care for our priests after retirement
- VI. Minister to those most in need

Parish Priorities:

\$0.35 of every \$1.00 raised will be returned to the parish. Each
parish will determine use of the funds individually.
Upon completion of an assigned goal, 100% will remain at the parish.

Catholic Education: Two new High Schools	\$30,000,000
Elementary School Tuition Assistance	\$18,000,000
Special Education Tuition Assistance	\$2,000,000

Cathedral Basilica of Saints Peter and Paul:

A primary objective of Heritage of Faith-Vision of Hope is to restore and preserve the historic Cathedral Basilica of Saints Peter and Paul, and architectural treasure and the history of the Church of Philadelphia.

Saint Charles Borromeo Seminary

Immediate Infrastructure needs	\$10,000,000
Endowment for Philadelphia Seminarians	\$6,000,000
Renovation of Saint Martin’s Chapel	\$4,000,000

Clergy Retirement: Care for priests after retirement, ensuring adequate medical care.

Catholic Human Services

Assistance for those most in material need by furnishing Catholic Human Services with the financial resources to sustain its mission.

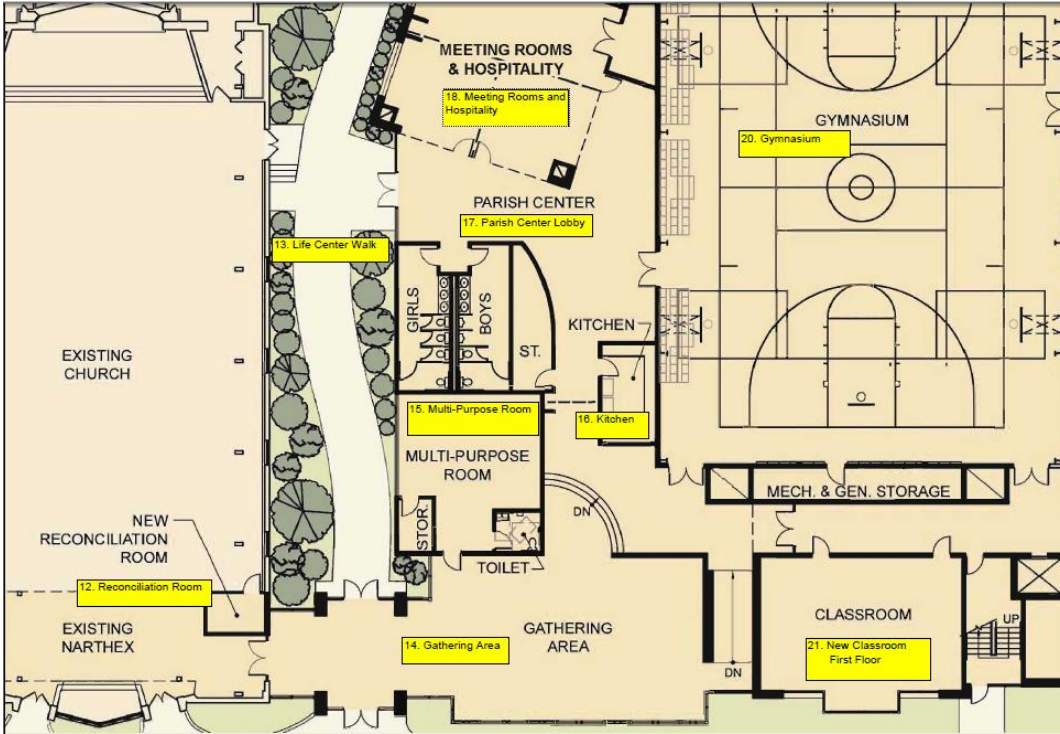
Appendix D

Naming Opportunities

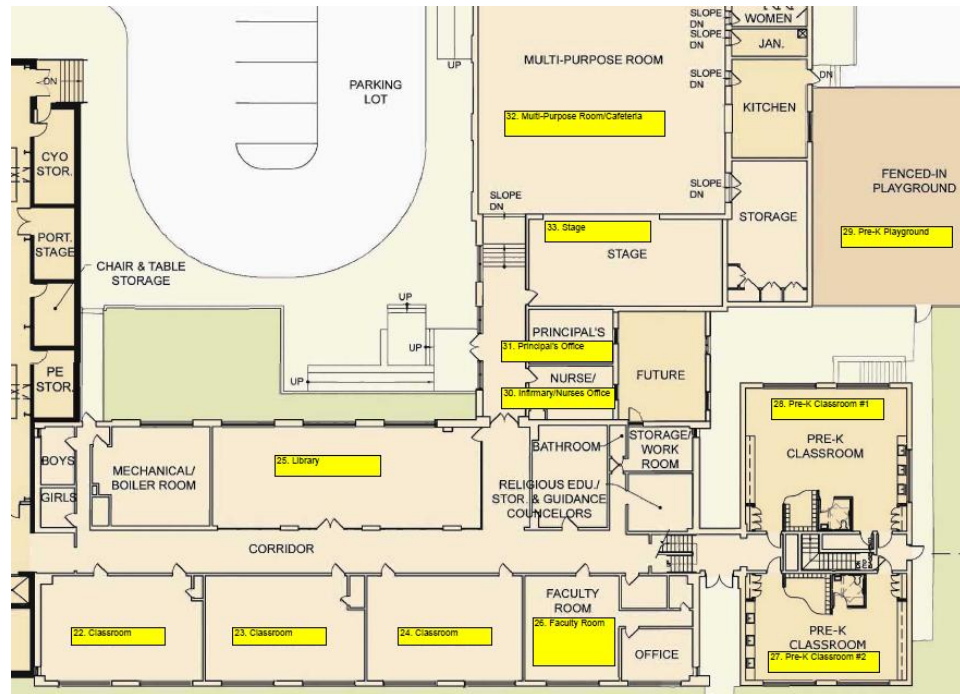
Front Perspective



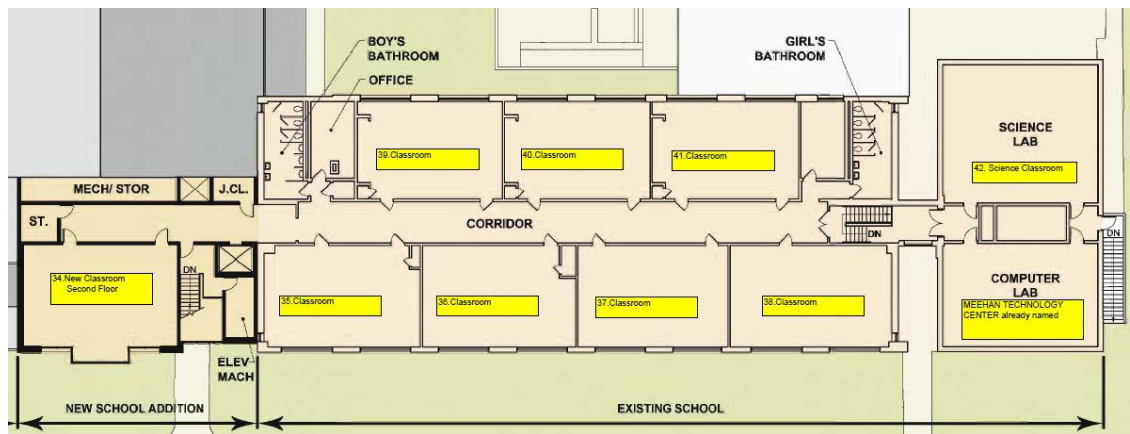
First Floor (Part I)



First Floor (Part 2)



Second Floor



Naming Opportunities are available to all parishioners and those individuals who desire to memorialize a special individual or group. All opportunities will be approved by our Pastor. This list represents the initial offerings and will be available on a first come, first serve basis. The official available naming list will be kept on file in the Parish office. On a separate handout there is a complete list and a separate list of requested offerings for each naming opportunity. The list will evolve on a daily basis so check on each opportunity before committing to an individual.